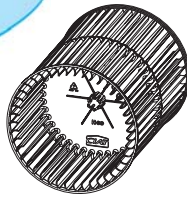




Ductable units

NEW

HEE impeller
for increased
performance



COADIS SLIM

COADIS SLIM

*high pressure, slim,
ductable unit*

For large office buildings



The COADIS SLIM:

- A comfort unit with high available static pressure (90 Pa)
- Reduced thickness (230mm), and reduced suspended ceiling occupancy
- Easy maintenance, without dismantling the unit, thanks to easy access to the fan motor assembly, air filter, electric heaters, as well as to the hydraulic coil assembly
- Very low acoustic level
- Large diameter impellers (Ø160mm) satisfying the high available static pressure requirements and capable of keeping correct performances in spite of filter fouling
- The optional HEE motor makes the unit even more energy efficient than is currently required by regulations

USE

COADIS SLIM is a non-independent air conditioning comfort unit to be installed in suspended ceilings. It is especially designed to meet the requirements of tertiary premises which have reduced space between the ceiling and the suspended ceiling.

Range

Available in 2-pipe, 2-pipe + 2-wire and 4-pipe systems; 2 models of **COADIS SLIM** are available:

● **I Model:** The unit recovers the bulk air at the rear and discharges it through a rectangular sleeve:

- Air recovery grille (optional) with possibility of a filter on the unit or on the recovery grille (consult us)
- Air diffusion kit with grille and counter-frame to be sealed for soffit installation (optional - consult us). For more information, refer to COADIS COMFORT brochure

● **Y Model:** This unit recovers the bulk air at the rear and discharges it through circular spigots:

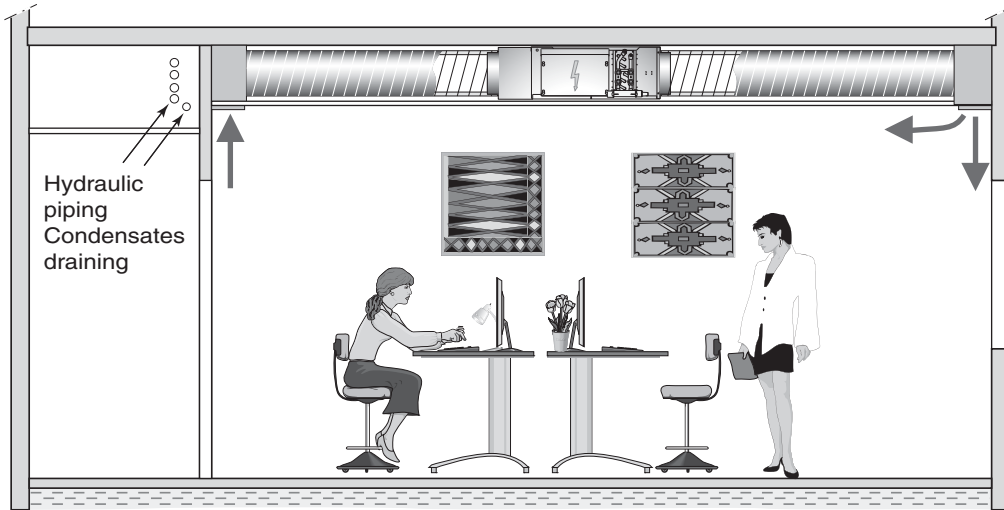
- Air return plenum (optional) for ducted air intake
- Complete air diffusion kit with grille, duct and plenum for soffit installation (optional, consult us). For more information see COADIS COMFORT brochure

Reduced thickness unit, **COADIS SLIM** comes in 3 sizes: 235/11 N, 235/22 N and 235/33 N

Easy access to the fan motor assembly unit, filter, electrical heaters and coil + condensates drain pan assembly simplify and reduce the costs of the maintenance operations



The CIAT company participates to the EUROVENT certification programme for fan coil units. See performances in Eurovent mode, on last page of the range. The list of certified products and characteristics is listed in the EUROVENT manual, also available on the internet site www.eurovent-certification.com



COADIS SLIM is easy to install: four threaded rods are sufficient, preferably with resilient mounts.

The condensates drain pan is designed so as to avoid water retention. The "dry" drain pan prevents bacteria proliferation and interior corrosion.

COADIS SLIM has been designed for offices in great need of available static pressure (90 Pa nominal output flow).

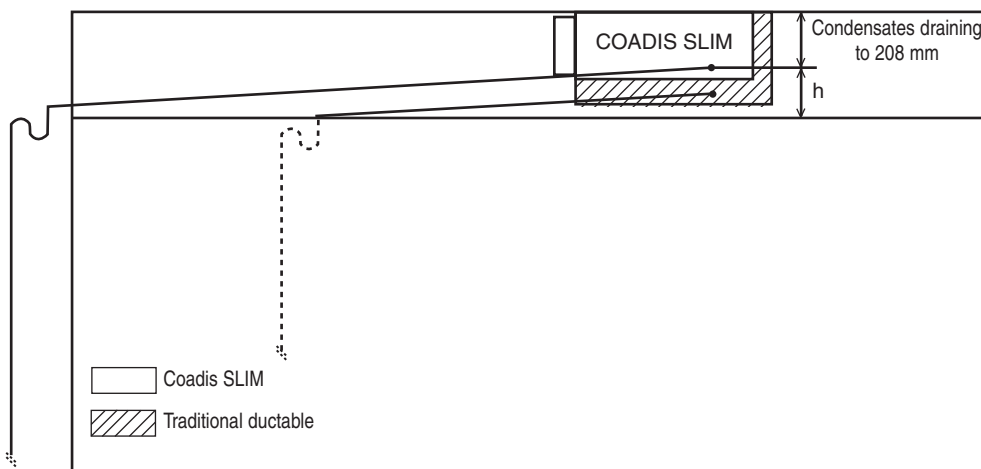
Large diameter (160mm) impellers ensure a correct output flow in spite of filter fouling. Long-lasting performances of the unit.

COADIS SLIM meets the constraints of the new thermal regulations perfectly.

Its very low latent power saves energy and optimizes the selection of water chillers.

Fresh air supply is possible (consult us).

COADIS SLIM IS THE IDEAL SOLUTION FOR OPEN-PLAN OFFICES



COADIS SLIM has a condensates drainage height (h) superior to that of the majority of ductable units. The condensates can be drained on a long piping distance by keeping a satisfactory draining slope. Therefore, in most cases, COADIS SLIM can function without a condensates drain pump. COADIS SLIM is the ideal solution for open-plan offices.

TECHNICAL DESCRIPTION

Water coil, 2 or 4-pipe system

- Galvanised sheet metal
- Copper pipes, continuous aluminium fins
- Monoblock connector with 40mm between axis for direct control valve mounting
- Air bleed and draining
- Nominal pressure 16 bar (20°C)
- Test pressure 24 bar
- Max water temperature: 110°C (PN 10)
- Water coil connectors on the left or right side of the unit when facing the air discharge (to be specified on order)

Electric heater, 2-pipe + 2 wire system

- Single-tube electric heating element(s) 230/1/50 integrated in the aluminium block.
- 2 manual-reset capillary temperature limiters with automatic and manual reset.

Condensate drain pan

- Easy-remove polymer pan in accordance with DGS 97/311 on Legionellosis.
- Without water retention, condensates draining at the level of the reclined drain pan bottom.
- Drainage connectors reversible manually to the front or rear.
- 4 drainage diameters: 15, 16, 22 or 28 mm as standard.

Fan motor assembly

- Motor
 - 7 speeds, 3 are pre-wired in factory (this wiring can be modified on site).
 - Sealed-type, tropicalised, with protected shaft and ball bearings.
 - Permanent condenser.
 - Automatic normally closed overload protection on coil.
 - Resilient mounts.
 - Power supply 230/1/5.
 - Reduced power consumption.
- Fan(s)
 - Galvanised sheet metal scroll(s).
 - HEE Ø160 mm dynamically balanced impeller(s) with forward-curved blades and dual inlets.
 - V0 fire rating.

Air filter

- Positioned on the air return, the filter is easily accessible
- Flexible filtering media in polyester fibers, renewable
- EN 779: G3 efficiency.
- Fire rating M1.
- Rigid metal frame.

Frame

- Galvanised sheet metal
- Thermal and acoustic insulation in melamine resin on discharge side, open cells soft foam, with aluminium film, fire rating M1.
- Y Model: air discharge through Ø200mm circular spigots for the standard version (1 for 235/11 N, 2 235/22 N and 3 for 235/33 N). Optional, air discharge through Ø160mm circular spigots for CIAT diffusion kit below.
- I Model: Air discharge through rectangular sleeve

Electrical box

- On hydraulic connection side.
- Entirely sealed.
- DIN railing in accordance with EN 50022, 7.5 mm. depth
- Cable stops for customer's connection.

Air return plenum (optional)

- 150mm thick air return plenum with filter (possibility of fresh air nozzles, consult us)
- 30mm thick air return plenum without filter (the filter will have to be planned on the air return grille by the installer)

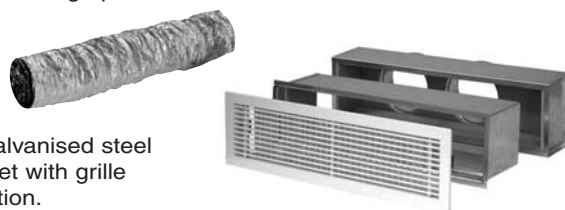
Diffusion kit for soffit air discharge (optional, consult us), see Coadis Comfort:

I Model:

- Air diffusion grille
 - WHITE RAL 9010 plain colour.
 - Double deflection louvres allowing air jet to adhere to the ceiling by Coanda effect.
 - Simplified assembly with quarter turn locks.
- Counter frame

Y Model:

- Air discharge grille
 - WHITE RAL 9010 plain colour.
 - Double deflection damper allowing air jet to adhere to the ceiling by Coanda effect.
 - Simplified assembly with quarter turn locks
- Discharge plenum



- Galvanised steel sheet with grille fixation.
- Thermal insulation avoiding condensation.
- Ø 160mm circular nozzle (1 for 235/11 N, 2 for 235/22 N and 3 for 2335/33 N).
- Ø 100mm pre-cut holes for fresh air inlet.
- Telescopic sleeve
 - Allows the connection between grille and plenum
 - Can be integrated in a 120 mm max. thickness wall.
- Circular isophonic flexible duct
 - Sold separately per standard length, to be cut on site

Note: Refer to user's installation brochure for further information.

ACCESSORIES

- Resilient fixation mounts.
- Ø 100mm smooth sleeve for possible treated fresh air inlet.
- Ø 100mm smooth sleeve with gasket and self adjusting module for possible treated fresh air inlet.
- Ø 125mm sleeve with or without self adjusting module, consult us.

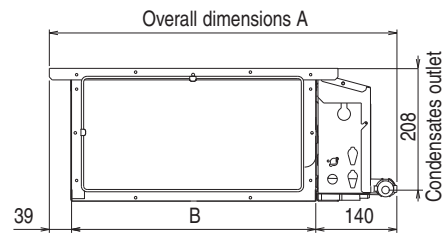
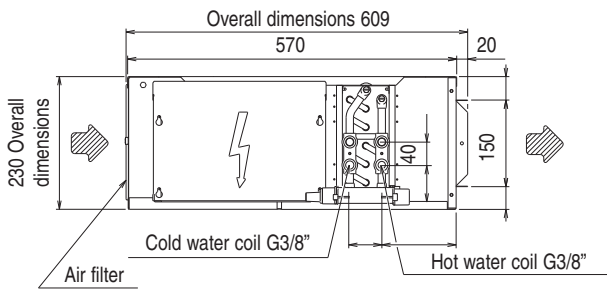
CONTROLS

- Wall-mounted electronic thermostat range
- V30 electronic range.
- V200 electronic range.
- V2000®, V3000 electronic range.
- LON control, consult us.
- 230 V thermo valve kit

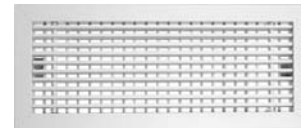
OPTIONAL (CONSULT US)

- 60 Hz operation (230V)
- High Energy Efficiency (HEE) motor

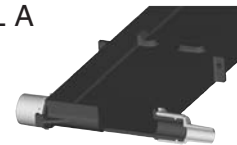
I MODEL DIMENSIONS



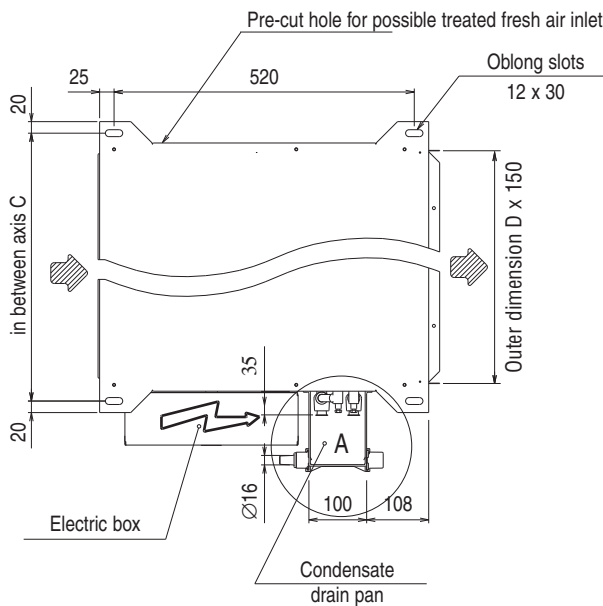
Rectangular air diffusion grille kit (consult us)



DETAIL A



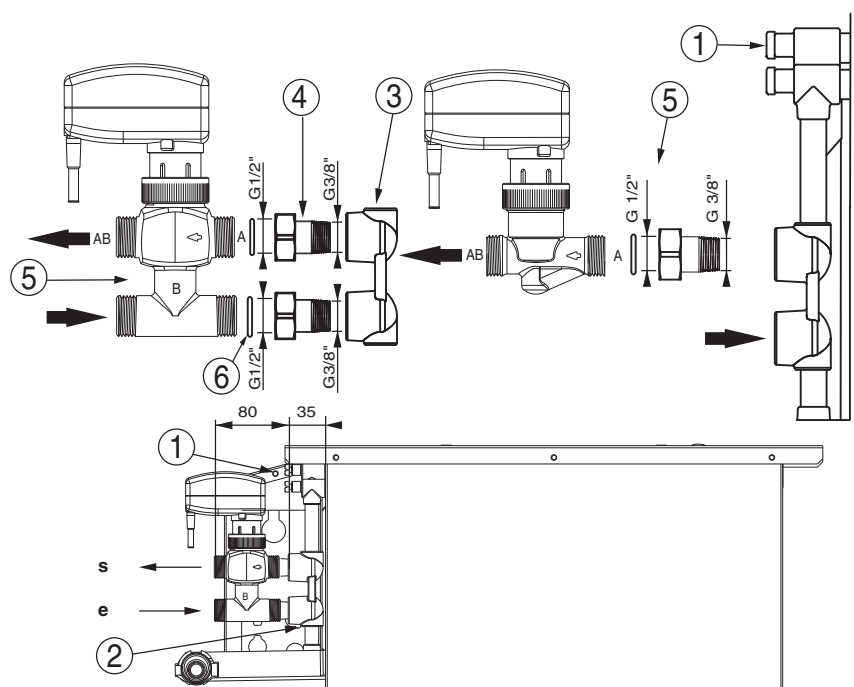
- . Dry drain pan, without water retention, avoiding bacteria proliferation
- . Polymer material smooth drain pan
- . Reversible connections with 4 diameters: 15, 16, 22 or 28mm.



COADIS SLIM	A	B	C	D	Mass kg
235/11 N	604	425	460	400	18
235/22 N	904	725	760	600	24
235/33 N	1204	1025	1060	800	32

I AND Y MODELS HYDRAULIC CONNECTIONS

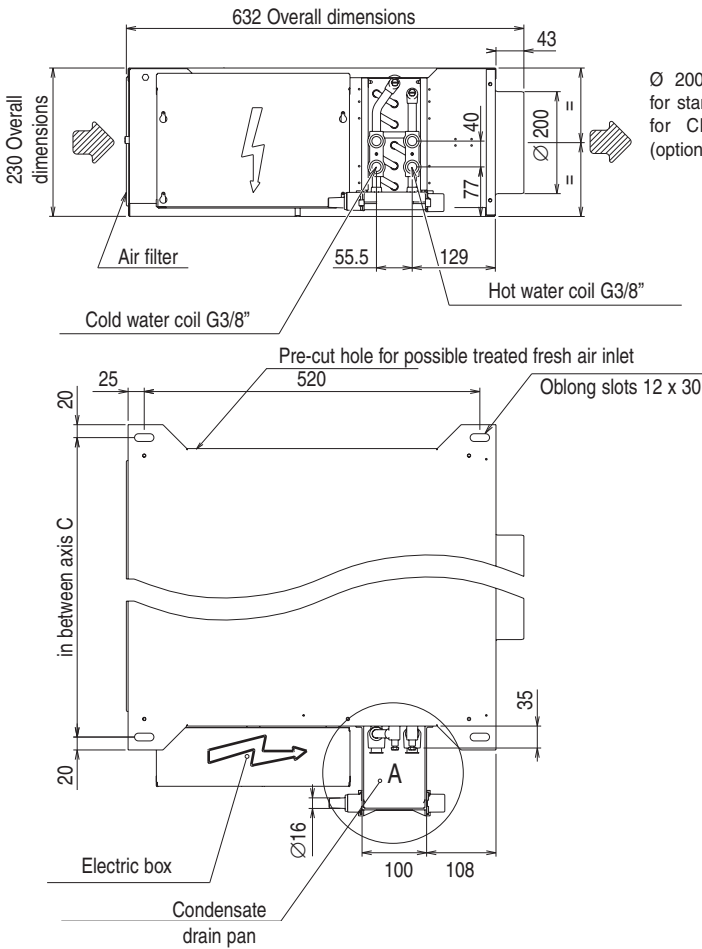
- ① Air vent
 - ② Coil drain
 - ③ Monoblock connectors with a fixed 40 mm between axis
 - ④ 2 piece flat surface male/female hydraulic connector 3/8" -> 1/2"
 - ⑤ Mounting example of a 2 or 4-way flat surface valve mounting (integrated with water regulation loop)
 - ⑥ O-ring
- e: Water coil inlet
s: Water coil outlet



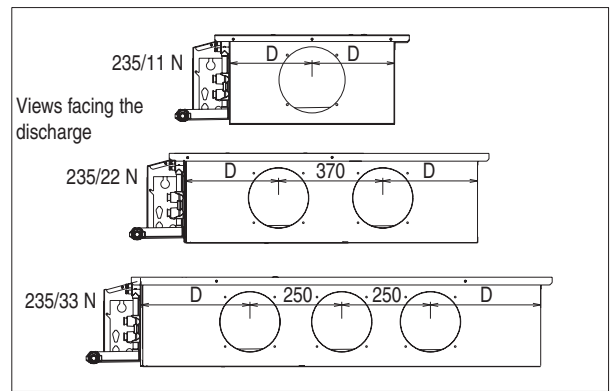
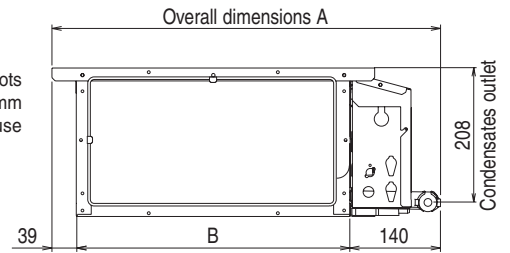


Ductable units

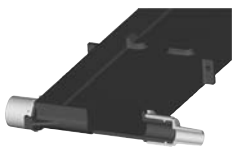
Y MODEL DIMENSIONS



Ø 200mm discharge spigots for standard version Ø160mm for CIAT diffusion kit use (optional)



DETAIL A



- . Dry drain pan, without water retention, avoiding bacteria proliferation
- . Polymer material smooth drain pan
- . Reversible connections with 4 diameters: 15, 16, 22 or 28mm.

COADIS SLIM	A	B	C	D	Mass kg
235/11 N	604	425	460	212.5	18
235/22 N	904	725	760	232.5	24
235/33 N	1204	1025	1060	262.5	32

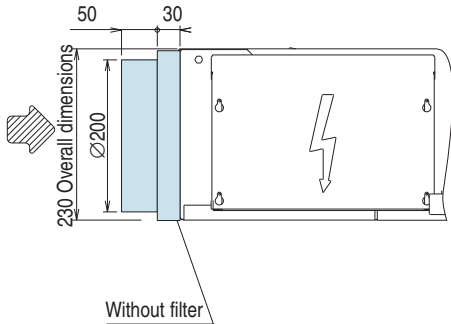
Refer to user's brochure for aeraulic balance



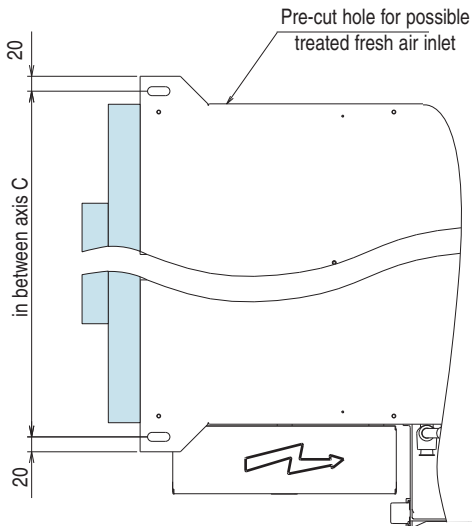
Diffusion kit for soffit air discharge (optional, consult us)
Ø160mm spigots must be specified on order

Y MODEL ACCESSORIES AND DIMENSIONS

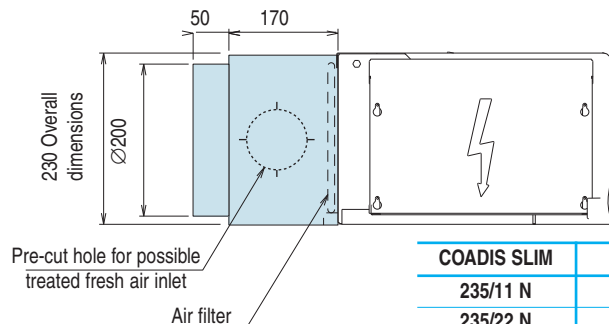
Sheet metal air return plenum
Thickness = 30mm without filter



Without filter



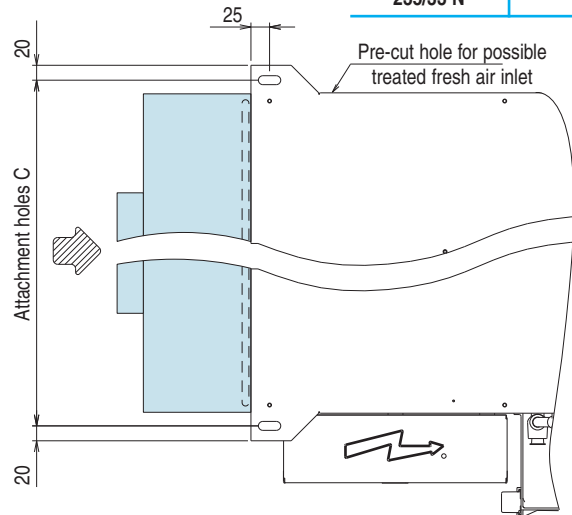
Sheet metal air return plenum
Thickness = 150mm with filter



Pre-cut hole for possible treated fresh air inlet

Air filter

COADIS SLIM	C
235/11 N	460
235/22 N	760
235/33 N	1060



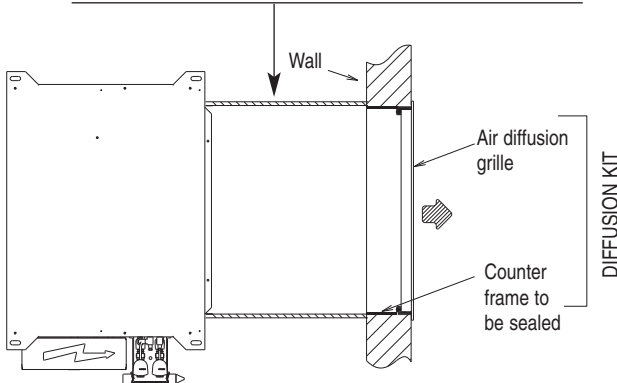
- The air return plenum has $\varnothing 200$ mm spigots in the standard version with:

- 1 spigot for **235/11 N** size
- 2 spigots for **235/22 N** size
- 3 spigots for **235/33 N** size

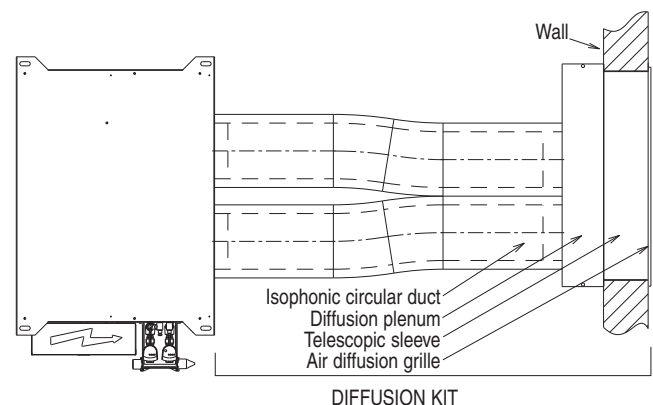
- In case of an air return plenum without filter, the installer will have to supply his own filter on the air return grille

AIR DIFFUSION KIT FOR SOFFIT INSTALLATION (SEE COADIS COMFORT)

I Model + air diffusion kit
Rectangular plenum supplied by customer



Y Model + Diffusion Kit





THERMAL PERFORMANCES

COADIS SLIM	Motor reference	Air flow m³/h	Available static pressure Pa (1)	2-pipe system W coil heating capacity	Cooling capacity W		4-pipe W type coil heating capacity	ISO or NR comfort level	Air temperature mean rise in K (2) Auxiliary electric heater 230/1/50		
					Total	Sensible			1R	1R	2R
235/11 N									600 W		1200 W
	R1	380	40	5 640	2 030	1 630	1 960	38	4,7		9,4
	R2	355		5 390	1 960	1 550	1 910	36	5,0		10,0
	R3	330		5 070	1 850	1 450	1 850	33	5,4		10,8
	R4	280		4 520	1 660	1 280	1 740	29	6,4		12,7
	R5	225		3 820	1 420	1 070	1 580	22	7,9		15,8
	R6	170		2 990	1 120	827	1 370	<15	10,5		21,0
	R7	115		2 140	809	577	1 120	<15	15,5		31,0
235/22 N									900W		1800W
	R1	585	40	9 110	2 940	2 420	3 940	38	4,6		9,1
	R2	530		8 490	2 760	2 240	3 770	36	5,0		10,1
	R3	505		8 190	2 660	2 150	3 680	32	5,3		10,6
	R4	395		6 780	2 250	1 780	3 260	27	6,8		13,5
	R5	360		6 290	2 100	1 650	3 100	23	7,4		14,9
	R6	285		5 180	1 760	1 350	2 720	17	9,4		18,8
	R7	215		4 040	1 400	1 050	2 290	<15	12,4		24,9
235/33 N									1200W	1800W	2400W
	R1	805	40	13 000	4 560	3 550	6 220	39	4,4	6,6	8,9
	R2	700		11 700	4 150	3 180	5 820	34	5,1	7,6	10,2
	R3	585		10 100	3 700	2 770	5 330	29	6,1	9,1	12,2
	R4	480		8 600	3 220	2 370	4 800	23	7,4	11,1	14,9
	R5	405		7 510	2 860	2 070	4 380	19	8,8	13,2	17,6
	R6	315		6 030	2 340	1 660	3 780	<15	11,3	17,0	22,6
	R7	225		4 450	1 750	1 210	3 040	<15	15,8	23,8	31,7

Standard factory wiring

Hot water temperatures: 90 / 70°C, winter air temperature conditions: 19°C, Cold water temperatures: 7 / 12°C, summer air temperature conditions: 27°C 50 % RH

(1) For higher available static pressures, consult us. 40 Pa corresponds to the mean pressure drop with nominal air flow of an aerualic network for a unit ducted on the air intake and discharge.

Table with 18 dB acoustic attenuation of the room and installation for Coadis Slim ducted at the air intake and discharge. If the unit is not ducted on the air intake, add 6 dB to the above comfort level.

(2) Please note, the air discharge temperature must not exceed 65°C (CIAT recommendation).

* For size 235/33 N special motors, consult us

ELECTRICAL CHARACTERISTICS OF 230V-1PH-50HZ MOTORS

COADIS SLIM	Motor reference	235/11 N	235/22 N	235/33 N	235/33 N *
Absorbed power (W)	R1	76	101	116	152
	R2	64	86	96	133
	R3	53	72	79	116
	R4	44	63	66	101
	R5	39	57	59	92
	R6	35	51	52	83
	R7	31	46	46	74
Absorbed current (A)	R1	0,33	0,44	0,50	0,66
	R2	0,28	0,37	0,42	0,58
	R3	0,23	0,31	0,34	0,50
	R4	0,19	0,27	0,29	0,44
	R5	0,17	0,25	0,26	0,40
	R6	0,15	0,22	0,23	0,36
	R7	0,13	0,20	0,20	0,32

* Characteristics of special motor for 235/33 N size

COIL CONTENT (L)

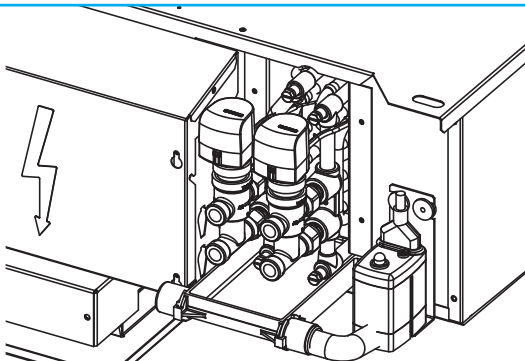
COADIS SLIM		235/11 N	235/22 N	235/33 N
2-pipe system	Cold water or hot water coil	0,4	0,78	1,05
4-pipe system	Cold water coil	0,4	0,78	1,05
	Hot water coil	0,12	0,22	0,3

COADIS SLIM		Water coil only				Standard unit								
		Connectors on left		Connectors on right		Water coil + electric element (2-pipe + 2-wire system)								
		2-pipe system	4-pipe system	2-pipe system	4-pipe system	Connectors on left		Connectors on right		1R	2R			
I Model	235/11 N	Code	7062213	7086872	7086876	7086880	600W 7086885		1200W 7086886		600W 7086896		1200W 7086897	
	235/22 N	Code	7062220	7086873	7086877	7086881	900W 7086888		1800W 7086889		900W 7086899		1800W 7086900	
	235/33 N*	Code	7062221	7086874	7086878	7086882	1200W 7086890	1800W 7086891	2400W 7086892		1200W 7086901	1800W 7086902	2400W 7086903	
Y Model	235/11 N	Code	7062222	7086909	7086914	7086918	600W 7086922		1200W 7086923		600W 7086933		1200W 7086935	
	235/22 N	Code	7062223	7086910	7086915	7086919	900W 7086924		1800W 7086925		900W 7086936		1800W 7086937	
	235/33 N*	Code	7062225	7086912	7086916	7086920	1200W 7086926	1800W 7086928	2400W 7086929		1200W 7086938	1800W 7086940	2400W 7086941	
* Extra price for special motor size 235/33 N (consult us for characteristics).		Code	E040290											

See pages on controls for a complete offer: terminal unit + control

COADIS SLIM OPTIONS (FITTED ON THE UNIT)

Description			235/11 N	235/22 N	235/33 N	
PL 6 PL 7 PL 8	Return air plenum with Ø 200mm polymer self-extinguishable circular spigots and filter housing (factory mounted on unit)	Code	E046248	E046256	E046264	
PL 9 PL 1L PL 2L	Return air plenum with Ø 200mm polymer self-extinguishable circular spigots without filter (factory mounted on unit)	Code	E046272	E046280	E046299	
Extra price for Ø 200mm sheet metal spigots instead of standard polymer spigots		Y Model	Code	E046363	E046364	E046365
		Y Model + return and plenum	Code	E046366	E046367	E046368

Description	Code
 <p>Condensates draining pump mounted on the unit with overflow safety device. 7l/h max. flow for a 1m draining height and a 5m max. piping length. 6l/h max. flow for a 1m draining height and a 10m max. piping length. Draining: 6mm internal diameter flexible tube, 8mm diameter spigot For superior draining heights, consult us. This accessory must be completed with a valve type regulation allowing slaving of the high safety device to the valve closing (condensates stopped).*** Approximate calculation of the condensate water flow:</p> $Q_v (l/h) = \frac{P_{total} - P_{sensible} (W)}{680}$	E045004

*** For pump kit, see accessories.







Note: images of the valve actuators are for information only and are not contractually binding.

units in stock for quick delivery



Ductable units

ACCESSORIES (SUPPLIED SEPARATELY)

Description		Code	
SU1	 <p>Resilient mounts supplied separately (4 required per unit).</p>	0219453	●
MO1	 <p>Smooth sleeve alone, ext. Ø 100 mm with nuts and screws.</p>	7013442	●
MO7	 <p>Spigot assembly, ext. Ø100mm* with self-adjusting module equipped with a gasket. Packed with nuts and screws and assembly drawing. The air flow rate controller is designed to supply a determined flow with a differential pressure between 50 and 100 Pa</p>	15/30/45 m³/h** 7013440	●
MO4	 <p>* Ø125mm, consult us ** 3 air flows are available by using wedges. The minimum air flow is by default.</p>	60/75/90 m³/h** 7013544	●
RA1	 <p>Two-piece male/female (3/8" > 1/2") coupling with seal.</p>	5202314 + 5200708	●
	 <p>Extended condensate pan collects condensates beneath the piping.</p>	7158842	●
<p>Condensate draining pump kit to be mounted on the unit with overflow safety device.</p> <ul style="list-style-type: none"> • 7l/h max. flow for a 1 m draining height and a 5m piping max. length. • 6l/h max. flow for a 1m draining height and a 10m max. piping length. <p>For superior draining heights, consult us. Draining: 6mm internal diameter flexible tube, 8mm diameter nozzle. This accessory must be completed with a valve type regulation allowing slaving of the high safety device to the valve closing (condensates stopped). Fixing device supplied with diagram</p>		7023316	●
<p>Approximate calculation of the condensate water flow: $Q_v (l/h) = \frac{P_{total} - P_{sensible} (W)}{680}$</p>			

UNITS WITH AIR CONTROL IN STOCK

AIR CONTROL		Application	Diagram		235/11 N	235/22 N	235/33 N	
SLIM: Y assembly, 2 pipes	WALL THERMOSTAT	Coadis SLIM: Y assembly, 2 pipes, left		Unit code (a)	<input type="checkbox"/>	<input type="checkbox"/>	<input type="checkbox"/>	
		On/Off + 3 speeds + manual dial - Heating/cooling with manual toggle switch	RTR-E 7015	5950338	RTR-E code (1)	<input type="checkbox"/>		
					Total price (a+1)	●	●	●
		On/Off + 3 speeds + manual dial - Heating or cooling only	COOLING RTR-E 7009 HEATING RTR-E 7009	7191518	RTR-E code (2)	<input type="checkbox"/>		
					Total price (a+2)	●	●	●
		Wall-mounted V30 with +/- dial, 3 speeds - Heating/cooling with automatic changeover supplied as a kit	A34H	7175611	V30 (3) + CO2 (4) code	<input type="checkbox"/>		
Total price (a+3+4)	●				●	●		
Wall-mounted V30 with +/- dial, 3 speeds - Heating or cooling only	COOLING A32H	7175609	V30(3) CODE	<input type="checkbox"/>				
	HEATING A30H	7175607	Total price (a+3)	●	●	●		

2-PIPE WATER CONTROL UNITS IN STOCK

WATER CONTROL		Application	Diagram		235/11 N	235/22 N	235/33 N	
SLIM: Y assembly, 2 pipes	WALL THERMOSTAT	Coadis SLIM: Y assembly, 2 pipes, left + 230 V two-way valve kit		Unit code (a) + kit code (7)	<input type="checkbox"/>	<input type="checkbox"/>	<input type="checkbox"/>	
		On/Off + 3 speeds + manual dial - Heating/cooling with manual toggle switch	RTR-E 7012	5950384	RTR-E code (5)	<input type="checkbox"/>		
					Total price (a+7+5)	●	●	●
		On/Off + 3 speeds + manual dial - Heating or cooling only	COOLING RTR-E 7011	5950268	RTR-E code (6)	<input type="checkbox"/>		
			HEATING RTR-E 7011	5950459	Total price (a+7+6)	●	●	●
		Wall-mounted V30 with +/- dial, 3 speeds - Heating or cooling only	COOLING E32H	7175615	V30(3) CODE	<input type="checkbox"/>		
			CHAUD E30H	7175613	Total price (a+7+3)	●	●	●
		Coadis SLIM: Y assembly, 2 pipes, left + 230 V four-way valve kit			Unit code (a) + kit code (8)	<input type="checkbox"/>	<input type="checkbox"/>	<input type="checkbox"/>
		On/Off + 3 speeds + manual dial - Heating/cooling with manual toggle switch	RTR-E 7012	5950384	RTR-E code (5)	<input type="checkbox"/>		
					Total price (a+8+5)	●	●	●
		On/Off + 3 speeds + manual dial - Heating or cooling only	COOLING RTR-E 7011	5950268	RTR-E code (6)	<input type="checkbox"/>		
			CHAUD RTR-E 7011	5950459	Total price (a+8+6)	●	●	●
		Wall-mounted V30 with +/- dial, 3 speeds - Heating/cooling with automatic changeover supplied as a kit	E35H	7175618	V30(3) Code + CO (4) sensor	<input type="checkbox"/>		
					Total price (a+8+3+4)	●	●	●
Wall-mounted V30 with +/- dial, 3 speeds - Heating or cooling only	COOLING E33H	7175615	V30(3) Code	<input type="checkbox"/>				
	HEATING E31H	7175613	Total price (a+8+3)	●	●	●		

Units in stock for quick delivery



Ductable units

EUROVENT PERFORMANCES - 2-PIPE SYSTEM

CIAT takes part in the EUROVENT fan coil unit certification program. In order to benefit from the latest updates, we advise you to consult the EUROVENT Internet site www.eurovent-certification.com



EUROVENT mode, 2-pipe system:

- Summer: cold water 7/12°C, air 27°C WB 19°C
- Winter: hot water inlet 50°C for water flow determined in summer mode, air 20°C

For ductable units, the air flows are determined by an available static pressure of 50Pa in medium speed.

COADIS SLIM	Motor reference	Air flow m³/h	Available static pressure Pa	Sensible cooling capacity kW	Total cooling capacity kW	Total heating capacity kW	Dp cooling kPa	Dp heating kPa	Lw Air discharge dBA	Lw air intake + radiated dBA
235/11 N	R1	325	57	1.400	1.580	2.050	18.0	15.3	54	57
	R2	305	50	1.330	1.510	1.970	16.6	14.1	53	56
	R4	245	32	1.090	1.260	1.670	12.0	10.2	47	50
235/22 N	R1	500	59	2.070	2.270	3.260	13.5	11.7	56	60
	R2	460	50	1.940	2.140	3.070	12.0	10.5	54	58
	R4	355	30	1.560	1.750	2.490	8.28	7.29	47	50
235/33 N	R1	630	62	2.820	3.280	4.380	27.9	24.0	57	60
	R2	565	50	2.580	3.040	4.030	24.5	21.0	54	57
	R4	400	25	1.940	2.380	3.040	15.6	13.5	45	47

Dp: Water pressure drop in kPa

Lw: Overall acoustic power in dBA

EUROVENT PERFORMANCES - 4-PIPE SYSTEM

CIAT takes part in the EUROVENT fan coil unit certification program. In order to benefit from the latest updates, we advise you to consult the EUROVENT Internet site www.eurovent-certification.com



EUROVENT mode, 4-pipe system:

- Summer: cold water 7/12°C, air 27°C WB 19°C
- Winter: hot water 70°C/60°, air 20°C

For ductable units, the air flows are determined by a available static pressure of 50Pa in medium speed.

COADIS SLIM	Motor reference	Air flow m³/h	Available static pressure Pa	Sensible cooling capacity kW	Total cooling capacity kW	Total heating capacity kW	Dp cooling kPa	Dp heating kPa	Lw Air discharge dBA	Lw air intake + radiated dBA
235/11 N	R1	325	57	1.400	1.580	1.400	18.0	1.88	54	57
	R2	305	50	1.330	1.510	1.370	16.6	1.81	53	56
	R4	245	32	1.090	1.260	1.240	12.0	1.53	47	50
235/22 N	R1	500	59	2.070	2.270	2.660	13.5	8.35	56	60
	R2	460	50	1.940	2.140	2.560	12.0	7.78	54	58
	R4	355	30	1.560	1.750	2.230	8.28	6.09	47	50
235/33 N	R1	630	62	2.820	3.280	3.970	28.5	20.3	57	60
	R2	565	50	2.580	3.040	3.760	25.0	18.4	54	57
	R4	400	25	1.940	2.380	3.110	16.0	13.2	45	47

Dp: Water pressure drop in kPa

Lw: Overall acoustic power in dBA

This document is non-contractual. As part of its policy of continual product improvement, CIAT reserves the right to make any technical modification it feels appropriate without prior notification.

Head office

Avenue Jean Falconnier - B.P. 14
01350 - Culoz - France
Tel.: +33 (0)4 79 42 42 42 - Fax: +33 (0)4 79 42 42 10
info@ciat.fr - www.ciat.com



CIAT Service

Tel.: +33 (0)4 79 42 42 90 - Fax: +33 (0)4 79 42 42 13

CERTIFIED ISO 9001
QUALITY SYSTEM



Compagnie Industrielle d'Applications Thermiques - S.A. with a registered capital of 26 728 480 € - R.C.S. Bourg-en-Bresse B 545 620 114